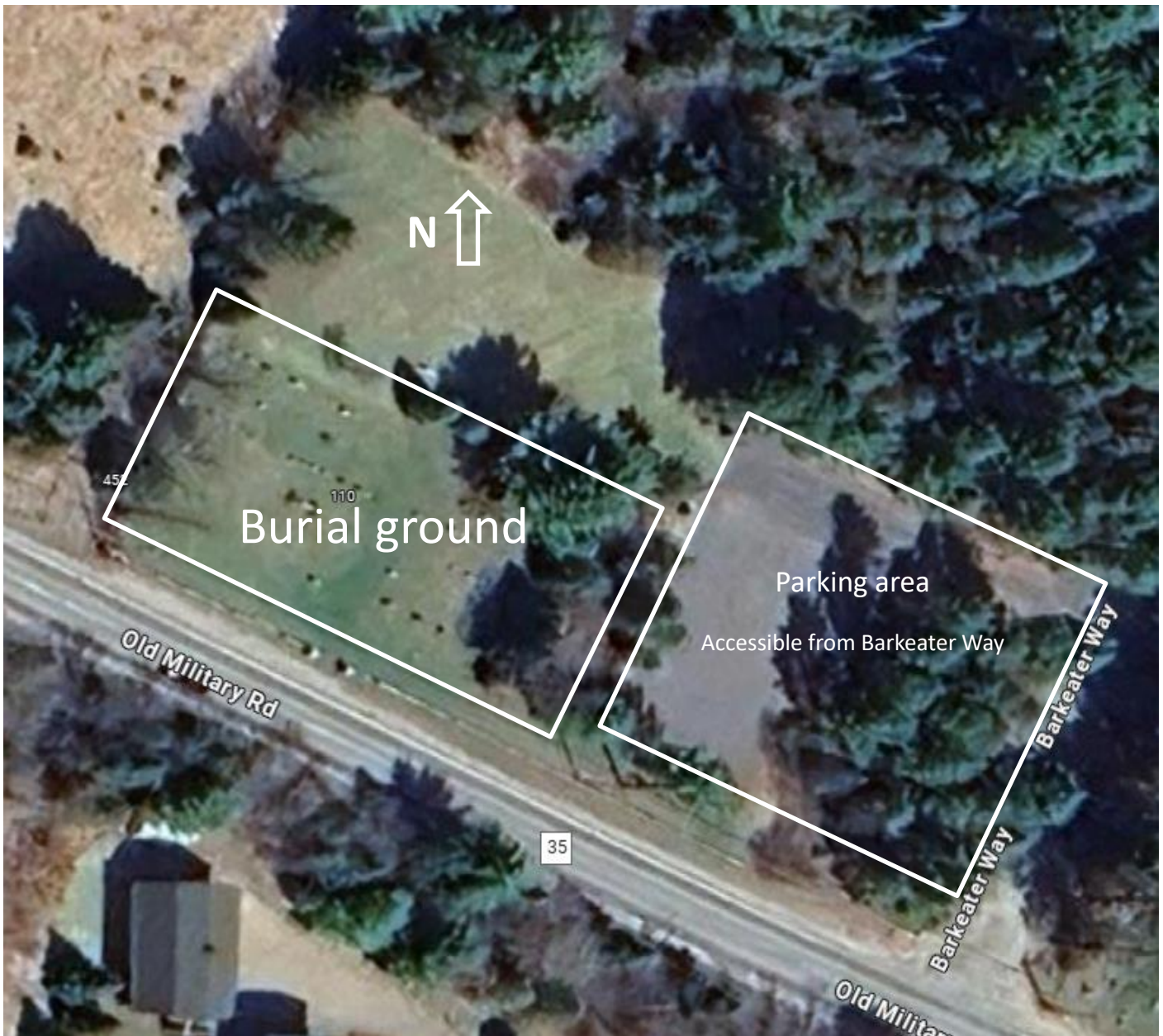


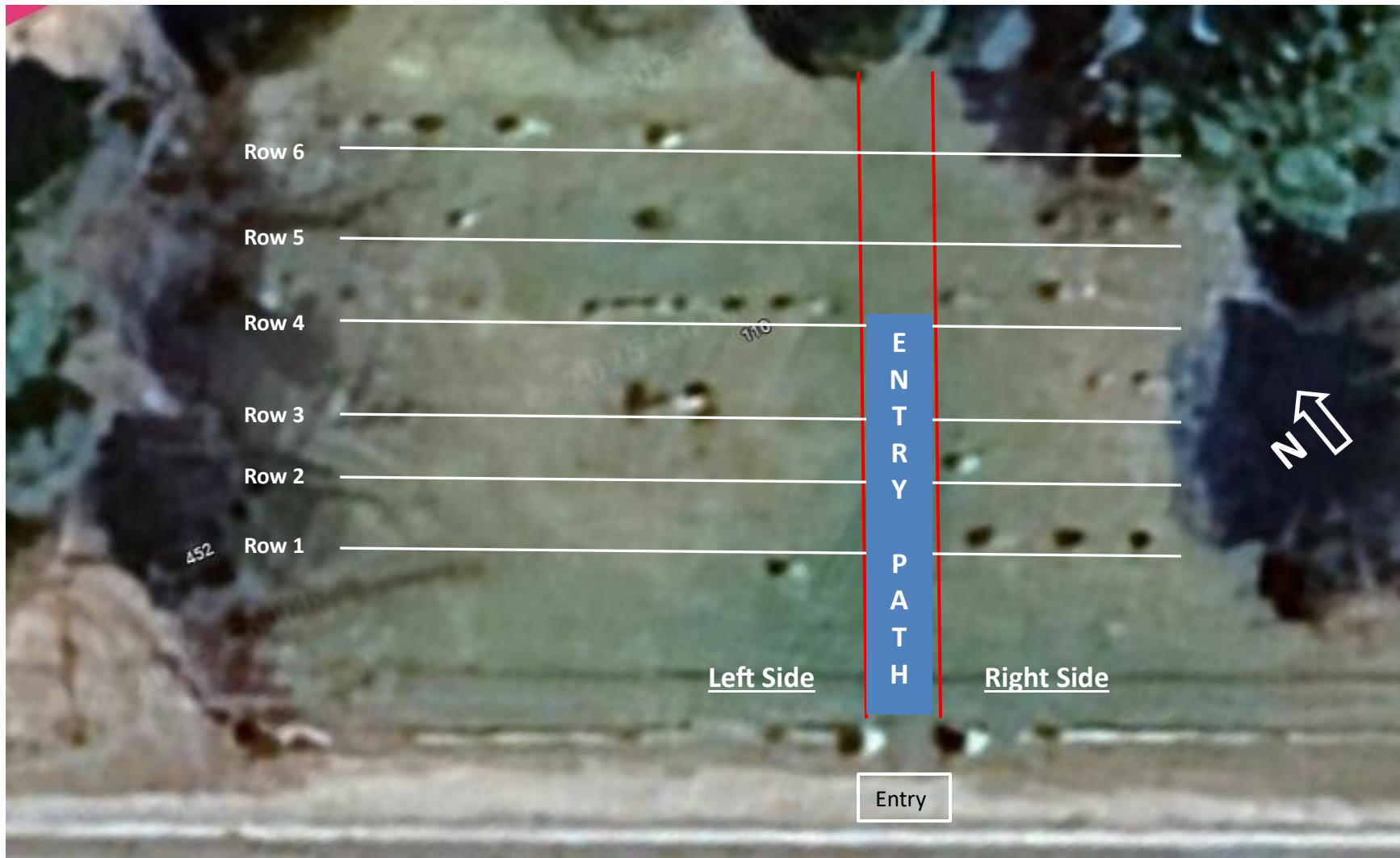
Lake Placid Synagogue Cemetery, 110 Old Military Road



The parking area is gravel covered and easily accessible from Barkeater Way. From the parking area there is direct foot access to the burial ground. Parking on Old Military Road is possible but not recommended because of traffic, especially in the summer or during “rush hours.”

See next page for more detailed view of Burial Ground

Lake Placid Synagogue Cemetery



In this index, individual graves are NOT numbered. Location is identified by row number and by whether the grave is to the left or right of the entry path. The Synagogue has very limited office hours and the indexer was unable to contact the office for information on the actual grave numbering system.