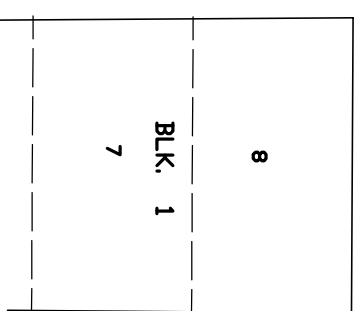
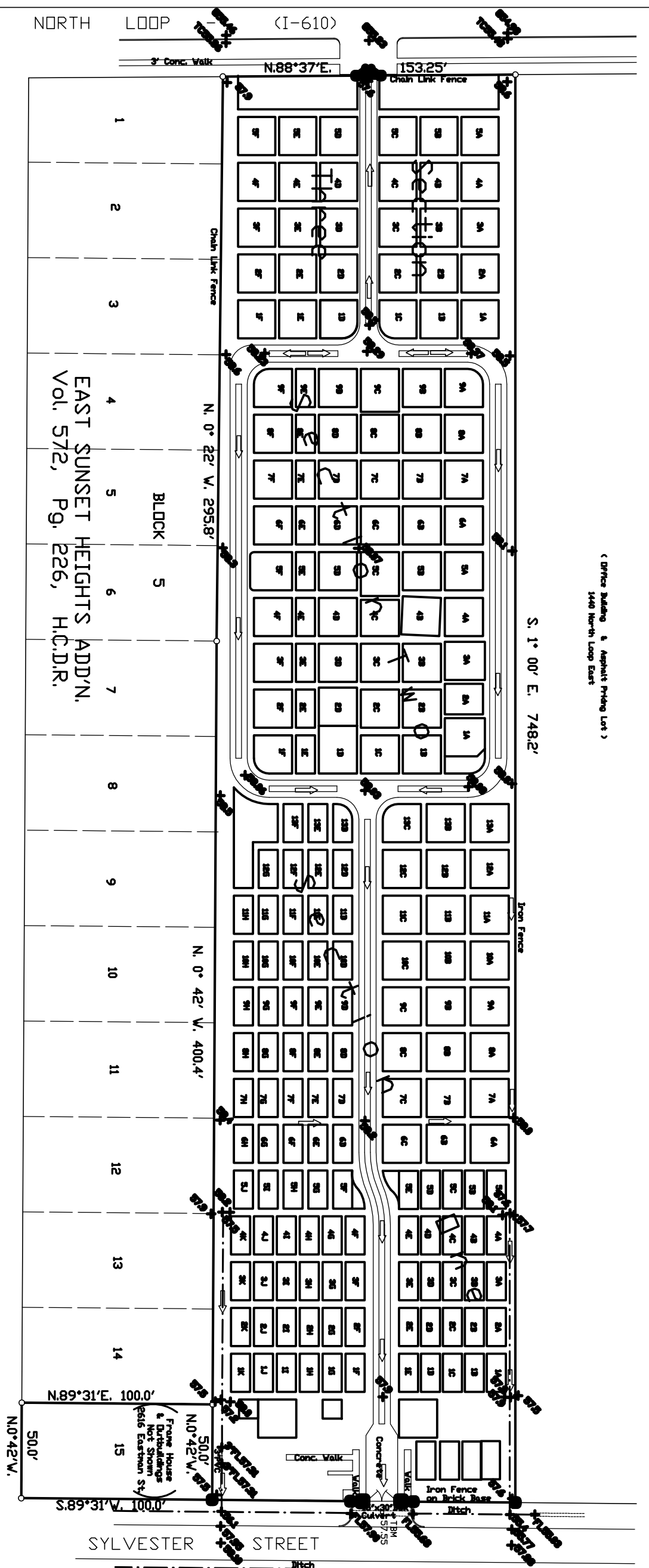
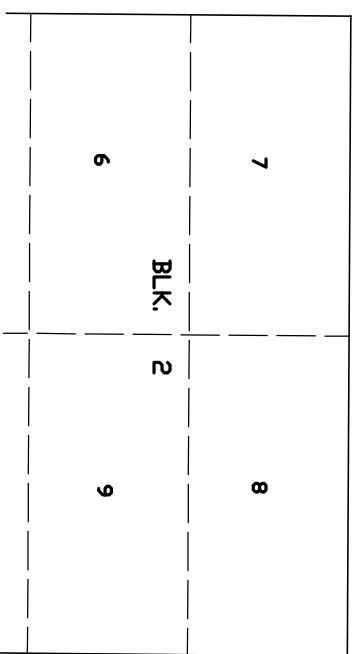


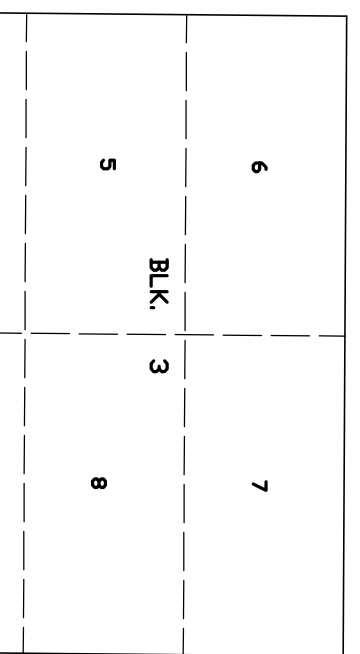
( Office Building & Asphalt Parking Lot )  
1400 North Loop East



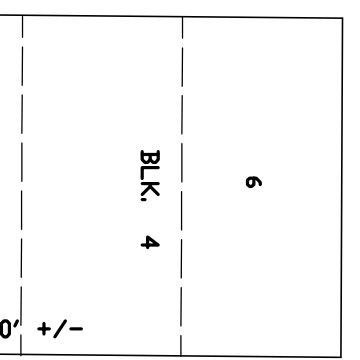
29TH STREET  
45' R/W



28TH STREET  
50' R/W



27TH STREET  
40' R/W



320' +/-

EASTMAN STREET  
50' R/W

EAST SUNSET HEIGHTS ADD'N.  
Vol. 572, Pg. 226, H.C.D.R.

**NOTES**

- BENCH MARK: Elev. 58.41' MGS Datum, 1973 M.J. City Sur. No. 5539-112 on E. Side Airline at E. 28th St.
- T.M. 1/4 on Top of Entrance over Culvert. Elev. 57.59'.
- Property Descriptions: - 18 Acres being Vest one-third of Lot 3 of Subdiv. of Collins 20-acre tract in Sherman 354-acre tract in John Austin 2-4-ge Grant. In Deed dated 3-5-19 John V. Wilson et ux to Congregation Adath Emeth, Vol. 417, Pg. 111, H.C.D.R.
- Lot 15, Block 5, East Sunset Heights per deed J.L. Moskowitz to Congregation Adath Emeth Vol. 664, Pg. 286, H.C.D.R.
- FLOODED PLAIN: This land is shown to be within Flood Zone X-Unshaded Areas determined to be outside 500-year flood plain on FEMA Number 68501 C 0579 K effective April 20, 2000.



SCALE: 1" = 60'  
OCTOBER 2003

Adath Emeth Cemetery  
1400 Sylvester Street  
Houston, Texas

**SITE PLAN**

LEDERER-MILLER & ASSOC. INC.  
CIVIL ENGINEERS & LAND SURVEYORS  
2990 RICHMOND, SUITE 440  
HOUSTON TX 77098

FILE: ada.th-eme.th.dwg  
JDB # 03-18

AIRLINE DRIVE